

CENTRE FOR BIOFIELD SCIENCES



AIM: The study was done in order to assess the effects of distant healing through PIP (Polycontrast Interference Photography).

PROCEDURE:

Number of subjects studied: 5

Duration of treatment : 5 mins.

Research conducted at : WPC MIT College, Paud road, Kothrud, Pune-411 038, India

A set of PIP scans were taken before starting the treatment. Treatment was given by Mary-Aton from Sweden. The patients gave their complaints on phone and accordingly distant healing was given. Here the first 3 scans were taken before giving the healing

CONCLUSION: - From this project we can conclude that distant healing has profound effect on the energy field of a person. The positive changes are seen at energy level as well as there is symptomatic improvement in the patient at physical, mental plane and especially on brow and crown chakras. We are able to document and show these changes with the help of Polycontrast Interference Photography.

SUBJECT : 01

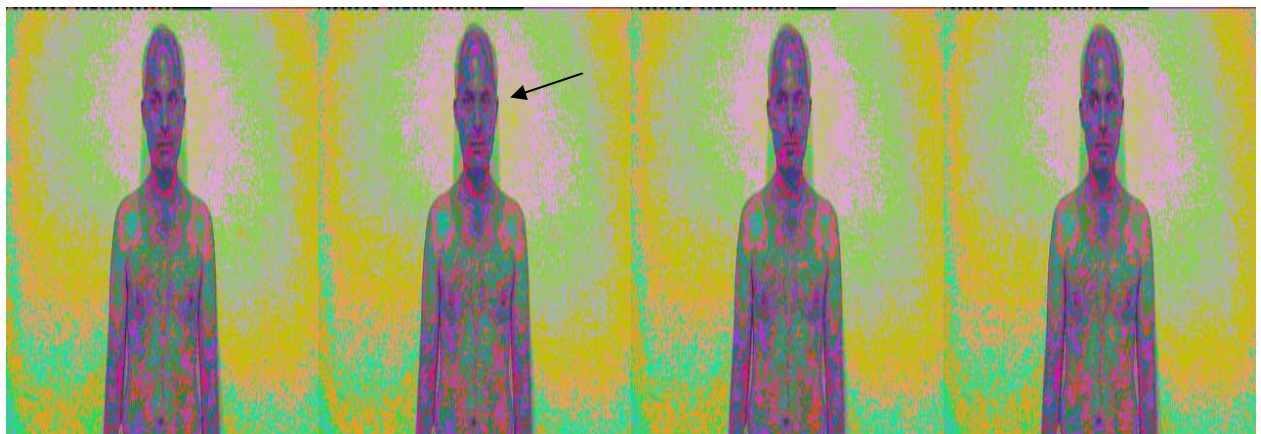
Complaints: Pain in stomach, due to hyperacidity. Aggravated after eating spicy or fried food.
Complaints since 1 year.

Duration of treatment: 5 Mins



1	2	3
---	---	---

initial 1-3 scans are done before starting the treatment. He has predominance of yellow in the Aura. There is a lot of pooling of low energy in the jaw area, Heart chakra, Liver area and scattered in the abdominal area. Brow chakra is congested indicating stress. Right and left auric field are not balanced. Stress is seen over the chin and facial muscles, which is indicated by red colour.



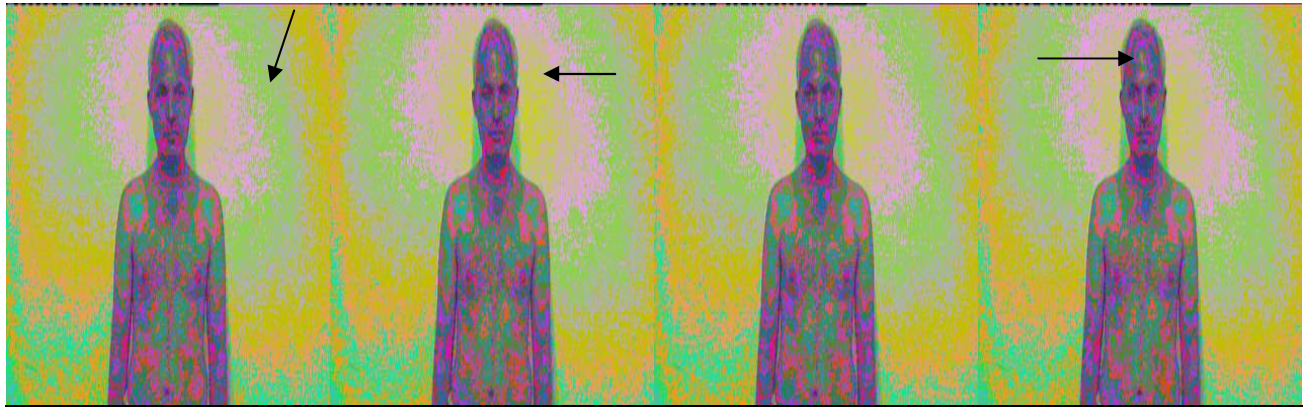
4	5	6	7
---	---	---	---

The scan 4-23 are taken while healing was on going. Time interval between two scans is 15 seconds. Golden yellow starts to appear (scan 5) on left side of patient.



8	9	10	11
---	---	----	----

Vibrancy of brow chakra has increased along with increase in green colour (scan 11). Green is colour of health. Increasing density of green is seen (from scan 8-11) Pooling of energy in abdominal area has also reduced which is again a positive sign (scan 11).



12	13	14	15
----	----	----	----

Again reduction in green colour is seen, but there is appearance of golden yellow colour (scan 13) in the aura around the head. The vibrancy of yellow is seen maximum in scan 13. The blocked brow chakra has started opening up. The red low energy has been replaced by green which indicates relaxation and reduction in stress.



16	17	18	19
----	----	----	----

Intermittent appearance of golden yellow is seen around the head, during distant healing. (Possibility that it co-relates with the cosmic energy sent by the healer during the healing session.) The vibrancy of brow has increased which is a positive sign. Bio fields appear to be getting symmetrical and balanced.



20	21	22	23
----	----	----	----

Scan 20-23 are taken at the end of session. As compared to scan 1-3 these scans show balanced field along with healthier solar chakra and opened up brow chakra which is very good. PATIENT FELT MUCH RELAXED AFTER THE TREATMENT AND SAID THAT HE FELT SOME KIND OF HEAT AROUND THE EARS DURING TREATMENT. (Similar feeling was expressed by another subject too.)

Patients comments after 3 days(on 05/01/2009)

Patient says he feels composed and calm. The feeling of relaxation has continued. No significant change in chief complaint .

SUBJECT : 02

Complaints: Stress was main complaint due to underlying sub fertility. Stress due to excessive work load and health complaints.

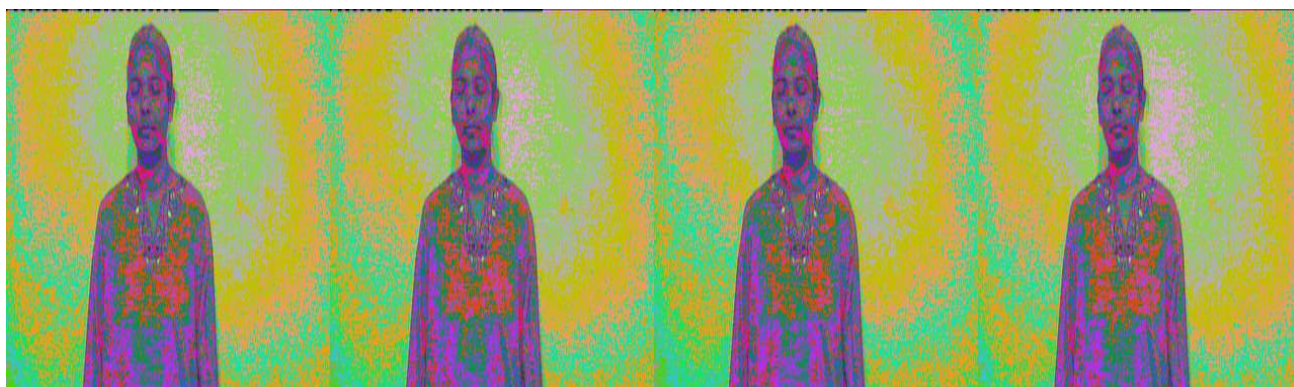
Duration of treatment: 5 Mins



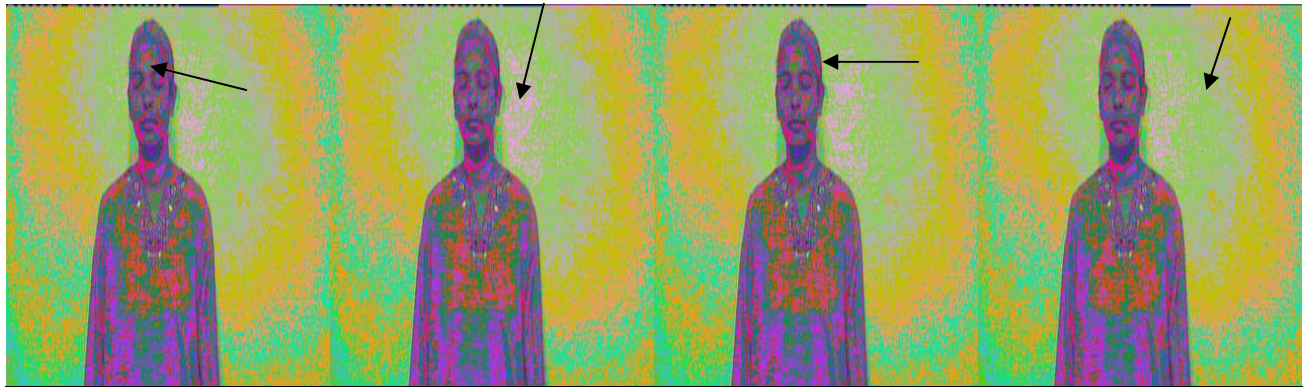
1	2	3
Initial 1-3 scans are done before starting the treatment. Centrally blocked brow chakra is seen with imbalance or asymmetrical right and left field. (Other chakras are not interpreted as the subject is wearing clothes during the scan.)		



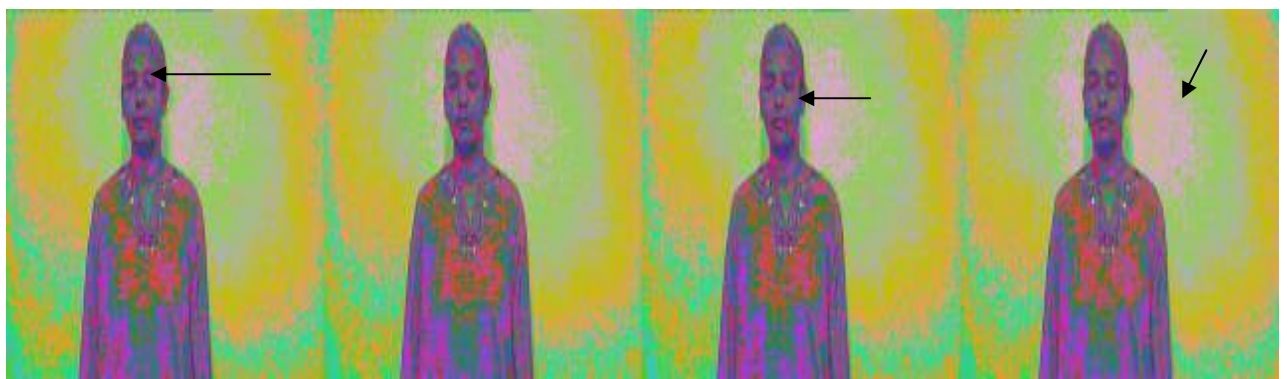
4	5	6	7
Scan 4 – 23 are taken at interval of every 15 mins during the distant healing process. Brow chakra has started opening up. The low /red energy in the brow is getting replaced by positive green energy along with increase in density of green in aura around the head.			



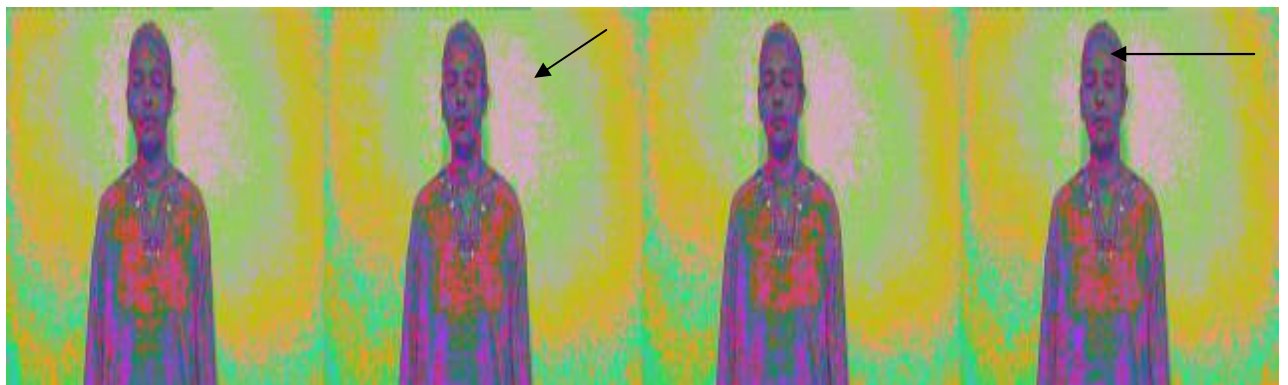
8	9	10	11
Rearranging of energy is seen as the healing goes on. Variable densities of green are seen during the process. The brow seems to be opening up in scan 10 -11 .			



12	13	14	15
<p>Density of green around the head is maximum in scan 12 -15. It probably indicates the peak of healing process. Maximum positive changes in brow are seen in these scans.</p>			



16	17	18	19
<p>Completely opened up brow chakra is seen in scan16. Stress over facial muscle, seen as bands of red has also reduced to a greater extend.</p>			



20	21	22	23
<p>Completely healed / opened up brow chakra is seen towards end of session along with significant reduction in facial stress. The overall Field has become more vibrant. PATIENT COULD SEE LAVENDER COLOUR SPOTS IN FRONT OF THE EYES WHILE HEALING WAS GIVEN. (Lavender is colour of healing energy)</p>			

Patients comments after 3 days i.e: 05/01/2009
 Feels relaxed and calm at mental plane.

WPC MIT College, Paud road, Kothrud, Pune-411 038
PH: +91 20 2545 8748
Fax: +91 20 25442770
Email: cbspune@biofieldsciences.com
Website: www.biofieldsciences.com